

MCUBE

APARTMENTS

Where tradition meets luxury...



AGRAWAL REVELADORE
INTEGRITY TRUST ACCOUNTABILITY





Actual Project Photograph



Temple at site



Park at site

Our Purpose and Values

Integrity, Trust and Accountability

These are the words we live by every day, in every community. This purpose rings true in how we listen to our vendors, customers, brokers and partners.

It shows in how we design and manage our developments, and in ways we serve others.

Leadership

Brijesh Agrawal is the Co-Founder and Managing Partner at Agrawal Reveladore , Haldwani. Having devoted 4 decades to the real estate industry, he has extensive experience as a developer of both residential and commercial real estate, across the State of Uttarakhand.

Brijesh Agrawal is also Managing Director at Agrawal Finprop Limited, Uttarakhand's leading Residential Real Estate Colonizer.



*These are architectural views only and originals may differ.



3 BHK FLOOR PLAN Super Area - 1175 sq. ft.

Contact : + 91 9837045318/9568000001 www.agarwalreveladore.com

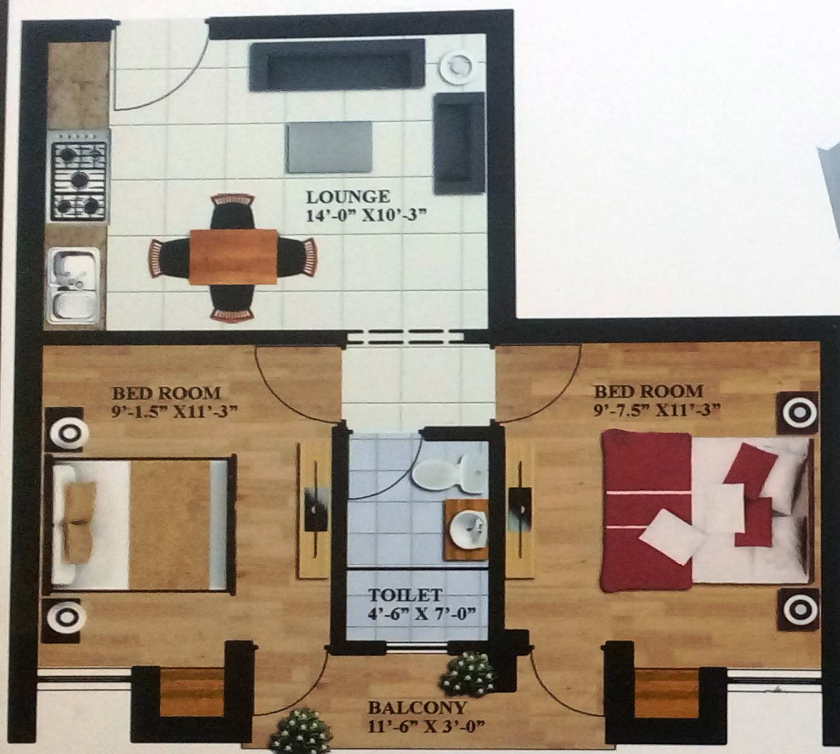




2 BHK FLOOR PLAN
Super Area - 882 sq. ft.

Contact : + 91 9837045318/9568000001 www.agarwalreveladore.com





2 BEDROOM FLOOR PLAN
Super Area - 700 sq. ft.

Contact : + 91 9837045318/9568000001 www.agarwalreveladore.com



Specifications



Structure

R.C.C. Framed Structure (Approved)

Bed Rooms, Living Room and Lounge

Floors	Digital Vitrified Tiles
External Doors and Windows	UPVC/Powder Coated Aluminium
Internal Doors	Enamel painted flush doors
Walls	Internal: Acrylic Emulsion/Oil Bound Distemper over POP punning External: Long lasting Weather shield paint
Switches	Branded modular switches

Modular Kitchen

Floors	Digital Vitrified Tiles
Fixtures and Fittings	Granite Top with steel sink & chimney and also tiles up to 2 feet height from granite top
Walls	Acrylic Emulsion/Oil Bound Distemper paint on ceiling

Toilet

Floors	Anti-skid tiles
Walls	Tiles in cladding up to 7', Balance walls painted in Acrylic Emulsion over POP punning
Doors	External: UPVC/Powder Coated Aluminium Internal: Flush doors
Fixtures and Fittings	Rain Shower in master bedroom toilet

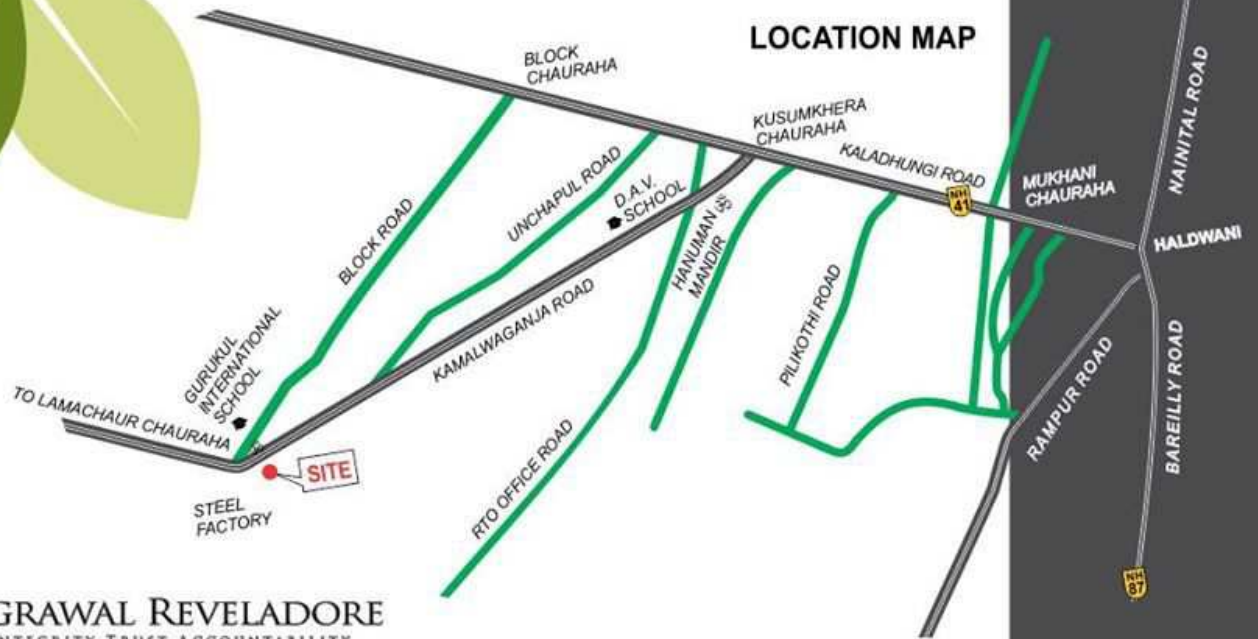
Balconies/Terrace

Walls	Exterior weather proof paint on wall and ceiling
Floors	Digital Vitrified Tiles
Railings	MS/MS Pipe enamel painted railing with handrail

Highlights

Electric	ISI Approved Cables, AC and Internet wire provision
Water	Common underground and overhead tanks
Power Backup	Common Power Backup for Lifts & others
Parking	Common Covered & Open Parking
Camera Surveillance	Hikvision or equivalent
Smoke and Fire Alarm	Honeywell or equivalent
Elevator/Lift	From Car Parking to Top Floor





AGRAWAL REVELADORE
INTEGRITY TRUST ACCOUNTABILITY

Regd. Office :

U-225, Durga City Center, Nainital Road, Haldwani (Nainital) - 263139

Correspondence Address :

Santushti, Vatika Enclave, Opp. St. Paul's School, Nainital Road, Haldwani (Nainital) - 263139

Site Office :

Royal Enclave, Narsingh Talla, Girija Vihar, Kaladunghi Road, Haldwani (Nainital) - 263139

Ph. +91 98370 45318, +91 95680 00001

Email : mudit.mittal@agrawalreveladore.com

Website : www.agrawalreveladore.com